



# FLOOD MASTER™

## HEAVY DUTY LED DC/AC FLOOD LIGHT OPTICAL CONTROL



MINING & HEAVY MACHINERY LIGHTING

The Flood Master has been designed as an energy efficient alternative for all MH & HPS lamps.

The Flood Master is housed in the toughest diecast available on the market and rated and rated to operate in IP69 conditions. The lamps are designed & manufactured in Australia and designed to withstand the worst conditions experienced in all Mining & Industrial applications.

The Flood Master has been designed for use on lighting towers, crusher plants, heavy machinery and general flood lighting purposes. The technology used in the electronic circuitry, allows the fitting to operate at an average of 156 lumens/watt, making it one of the most efficient flood lights on the global market.

With the option of 6 different optic designs, it ensures every application is covered and that the light produced, is directed to where you need it most.



PRODUCT NAME	FLOOD MASTER HEAVY DUTY LED FLOOD LIGHT - OPTICAL CONTROL VERSION - DC/AC				
MODEL	FM-60	FM-90	FM-120	FM-150	FM-180
POWER CONSUMPTION	60W	90W	120W	150W	180W
BEAM ANGLE	25°, 40°, 60°, 110°, ASSYMETRIC				
LIGHT OUTPUT EFFECTIVE	10,320 lm	14,820 lm	18,780 lm	22,250 lm	25,260 lm
LED EFFICACY	172 lm/W	164 lm/W	156 lm/W	148 lm/W	140 lm/W
IP RATING	IP69				
OPERATING TEMP °C	-40°C to +70°C				
NOMINAL VOLTAGE	AC Version 230v/AC				
VOLTAGE RANGE	DC Version 18-60vDC / AC Version 200-470vAC				
POWER FACTOR	At 240v/AC>0.97				
FREQUENCY RANGE	47-63Hz				
THERMAL MANAGEMENT	Electronic Active / Continuous				
CRI	70 CRI				
CCT/KELVIN	4000K, 5000K				
HOUSING	Diecast Aluminium				
BRACKET	4mm 304 Stainless Steel				
LED BIN SELECTION	5 SCDM Ellipses				
LINE CURRENT (230V/AC)	0.26A	0.39A	0.52A	0.65A	0.78A
DRIVER	External or Junction Box				
LENS	Polycarbonate or Toughened Glass				
CABLE LENGTH	1.2m Std or Custom				
EXPECTED LIFESPAN	>150,000 hours to L70				>120,000 hours to L90
SURGE PROTECTION	AC Version 10kV				
NET WEIGHT	DC Version 3.6kg or AC Version 6.5kg with Driver & Driver Box				
EMC COMPLIANCE	DC Version AS/NZS CISPR25 Level 3 / AC Version AS/NZS CISPR15				
SAFETY COMPLIANCE	AC Version AS/NZS 60598.1				
WARRANTY	5 Years				

Find out more at [dura-vision.com.au](http://dura-vision.com.au) or call 1800 66 55 66



# FLOOD MASTER™

HEAVY DUTY LED DC/AC  
FLOOD LIGHT OPTICAL CONTROL



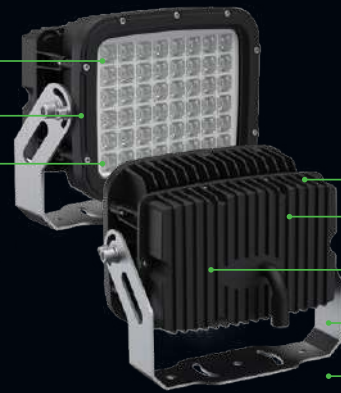
MINING & HEAVY MACHINERY LIGHTING

## DESIGNED FOR

- ✓ LIGHTING TOWERS
- ✓ AREA FLOOD LIGHTING
- ✓ HEAVY MACHINERY LIGHTING
- ✓ SHIP YARDS
- ✓ FISHING VESSELS
- ✓ OIL RIGS
- ✓ SECURITY FLOOD LIGHTING

## FEATURES

- 3MM DURABLE POLYCARBONATE LENS OR TOUGHENED GLASS
- 304 GRADE STAINLESS LENS CLAMPS
- 6 BEAM PATTERN OPTIONS



- SELF-CLEANING COOLING FINS
- ATMOSPHERIC PRESSURE EQUALISING BREATHER
- UV RESISTANT POLYESTER POWDER COATING
- CUSTOMISABLE POWER CONNECTION OPTIONS
- EXTERNAL DRIVER BOX

## TECHNICAL DRAWINGS

