



# FLOOD MASTER™

HEAVY DUTY LED DC/AC  
FLOOD LIGHT WIDE FLOOD



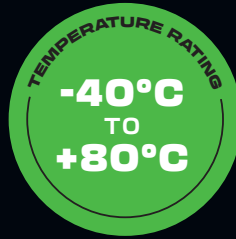
MINING & HEAVY MACHINERY LIGHTING

The Flood Master has been designed as an energy efficient alternative for all MH & HPS lamps.

The Flood Master is housed in the toughest diecast available on the market and rated and rated to operate in IP69 conditions. The lamps are designed & manufactured in Australia and designed to withstand the worst conditions experienced in all Mining & Industrial applications.

The Flood Master has been designed for use on lighting towers, crusher plants, heavy machinery and general flood lighting purposes. The technology used in the electronic circuitry, allows the fitting to operate at an average of 156 lumens/watt, making it one of the most efficient flood lights on the global market.

With the option of 6 different optic designs, it ensures every application is covered and that the light produced, is directed to where you need it most.



PRODUCT NAME	FLOOD MASTER HEAVY DUTY LED FLOOD LIGHT - WIDE FLOOD VERSION - DC/AC			
MODEL	FM-90	FM-120	FM-180	FM-240
POWER CONSUMPTION	90W	120W	180W	240W
BEAM ANGLE	180° Full Width			
LIGHT OUTPUT EFFECTIVE	17,100lm	22,000lm	31,180lm	39,100lm
LED EFFICACY	190lm/W	183lm/W	173lm/W	162lm/W
IP RATING	IP69			
OPERATING TEMP °C	-40°C to +80°C			
NOMINAL VOLTAGE	AC Version 230v/AC			
VOLTAGE RANGE	DC Version 18-60vDC / AC Version 200-470vAC			
POWER FACTOR	At 240v/AC>0.97			
FREQUENCY RANGE	47-63Hz			
THERMAL MANAGEMENT	Electronic Active / Continuous			
CRI	80 CRI			
CCT/KELVIN	4000K, 5000K			
HOUSING	Diecast Aluminium			
BRACKET	4mm 304 Stainless Steel			
LED BIN SELECTION	3 SCDM Ellipses			
LINE CURRENT (230V/AC)	0.26A	0.39A	0.52A	1.04A
DRIVER	External or Junction Box			
LENS	Polycarbonate or Toughened Glass			
CABLE LENGTH	1.2m Std or Custom			
EXPECTED LIFESPAN	>120,000 hours to L70			
SURGE PROTECTION	AC Version 10kV			
NET WEIGHT	3.6kg or 6.5kg with Driver & Driver Box			
EMC COMPLIANCE	DC Version AS/NZS CISPR25 Level 3 / AC Version AS/NZS CISPR15			
SAFETY COMPLIANCE	AC Version AS/NZS 60598.1			
WARRANTY	5 Years			

Find out more at [dura-vision.com.au](http://dura-vision.com.au) or call 1800 66 55 66



# FLOOD MASTER™

HEAVY DUTY LED DC/AC  
FLOOD LIGHT WIDE FLOOD

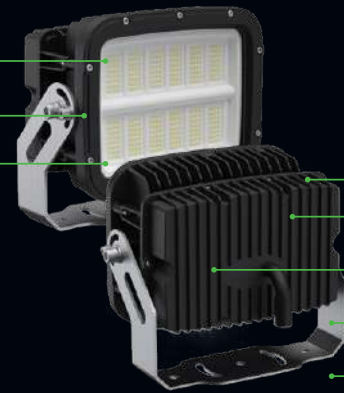


## DESIGNED FOR

- ✓ LIGHTING TOWERS
- ✓ HEAVY MACHINERY
- ✓ DRAGLINES
- ✓ HYDRAULIC SHOVELS
- ✓ MARINE LIGHTING
- ✓ SECURITY LIGHTING
- ✓ GENERAL FLOOD LIGHTING

## FEATURES

- 3MM DURABLE POLYCARBONATE LENS OR TOUGHENED GLASS
- 304 GRADE STAINLESS LENS CLAMPS
- 6 BEAM PATTERN OPTIONS



- SELF-CLEANING COOLING FINS
- ATMOSPHERIC PRESSURE EQUALISING BREATHER
- UV RESISTANT POLYESTER POWDER COATING
- CUSTOMISABLE POWER CONNECTION OPTIONS
- EXTERNAL DRIVER BOX

## TECHNICAL DRAWINGS

